

Lomba

Operations “Modular” / “Saudemos Outubro” (September 1987)

1. Strategic situation

In 1987 the FAPLA launched an offensive in the Kuando-Kubango province (6th military region), in the Angolan southwest. Their objective was to capture Mavinga, UNITA’s main base in the region. This particular action took place on the 9th and 10th September when the 21st Light Infantry Brigade tried to cross the Lomba river towards south.

2. The forces

The main units participating in the first stage of this campaign, culminating in the Battle of Cuito-Cuanavale” (September 1987 to March 1988) are the following:

FAPLA

- 16th Infantry Brigade
- 21st Light Infantry Brigade
- 47th Armoured Brigade
- 59th Mechanised Infantry Brigade

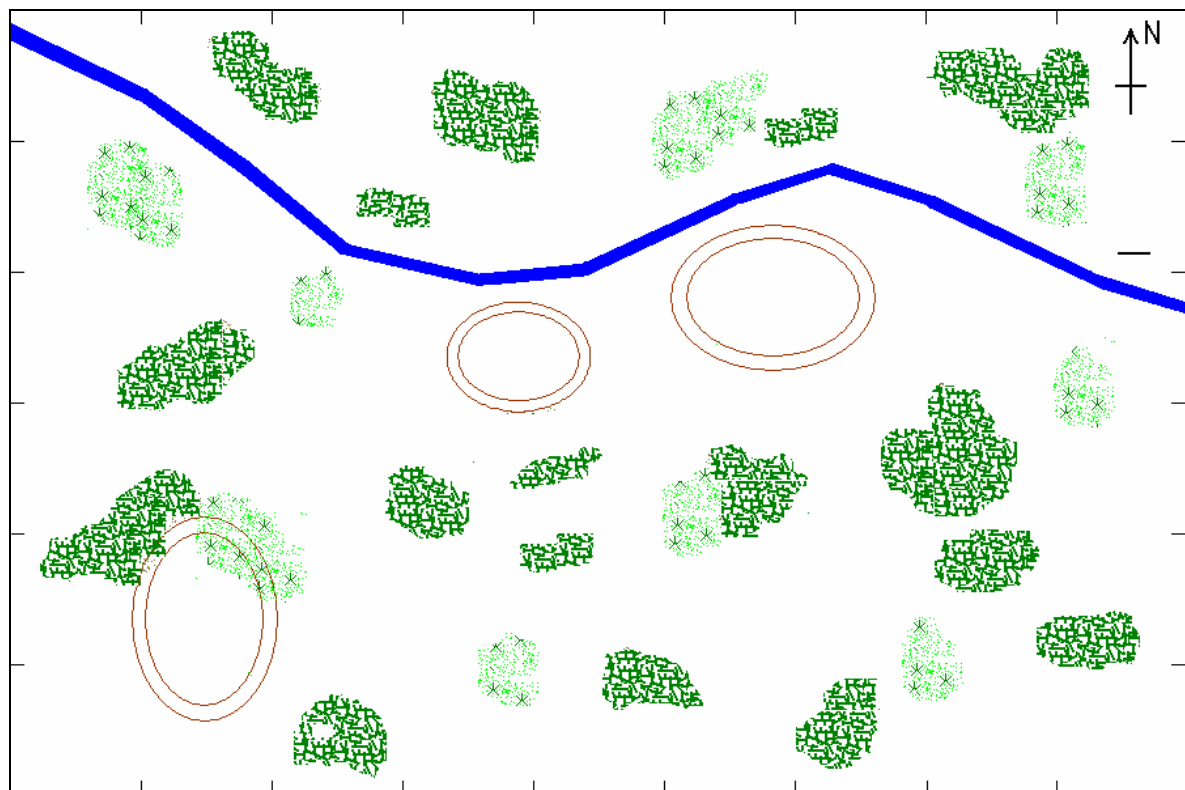
SADF/SWATF

- 4th Infantry Tactical Group
- 32nd Mechanised Infantry Battalion “Buffalo” (Jock Harris)
- 61st Mechanised Infantry Battalion
- 101st Light Infantry Battalion (Robbie Hartslief)



Colonel Deon Ferreira organized his Brigade into 3 Battle Groups plus artillery:

- Battle Group *Alpha* (Smith)
 - Battle Group *Bravo* (Robbie Hartslief)
 - Battle Group *Charlie* (David Lotter)
- 20th Artillery Regiment:
- Battery “Quebec” G5 155 mm
 - Battery “Papa” MRL 127 mm (Valkyrie)
 - Battery “Sierra” M-5 120 mm (morteiros)

3. The battlefield



Legend:

	Tall grass and brush		Woods
---	----------------------	---	-------

SADF/SWATF

4. The settings

The Battle Group “Bravo”’s commander was given the information that FAPLA’s 21st LIBr is trying to build some bridges across the Lomba river. He is tasked, therefore, to destroy those crossings and crush the FAPLA forces placed south of the river.

Battle Group “Bravo”’s composition:

Unit	Composition	OP
Reconnaissance	1 st Reece unit: 2x Ratel 20	4
	2 nd Reece: 2x Ratel 20	4
32 nd Infantry Battalion “Buffalo”	F Infantry Coy “Foxtrot”: 3x Buffel + infantry	12
101 st Light Infantry Battalion	A Infantry Coy “Alpha”: 4x Casspir + infantry	16
1 st AT Group	3x Ratel 90	12
2 nd AT Group	3x Ratel 90	12
Support unit	1x M151 Jeep/ENTAC	2
	1x M151 Jeep/ENTAC	2
	1x Ratel ZT3	4
1x Advanced Artillery Controller		0

Total: 68 Operational Points, **withdraw** at 50% casualties (34 OP).

Air Support:

1x CAS mission (exclusive targets: the bridges): 2x Aermacchi MB-326 Impala

Dedicated artillery support:

Batteries “Sierra” (M-5 120mm mortars) and “Papa” (127mm MRLs)

The **Advanced Artillery Controller**’s position must be marked on the map. He doesn’t move. If the Controller is within enemy’s detection range he’s removed.

5. Commanders’ orders:

- 1 – Destroy both bridges over the Lomba river;
- 2 – Destroy one bridge and push back the FAPLA forces south of the river.

Special rules:

In order to destroy the bridges using artillery, either destroy the bridge-laying device before the bridge is set, or twice score a 4+.

In order to determine the outcome of an air attack, use the Air-Ground Table of the “Tactical Air Support” separate rules.

FAPLA

4. The settings

The 21st LIBr's commander must establish two crossing points over the river and secure the bridgehead. One of the crossing points was built during the night and some units are already on the other side of the river. The commander must decide where the first bridge is placed; the location of the second bridge must be decided in the Command Phase of the 1st Turn. It takes two turns to build the bridge.

Before the game starts the Angolan side must roll:

- 1x d6 to determine how many units may be placed on the south side of the river. On an outcome of 1-3: one Reece unit; 4-5 = two Reece units; 6 = two Reece units + another unit of choice.
- 1x d6 to determine how many BMP 1 have Sagger ATGM (1 per vehicle). On an outcome of 1-2: one; 3-4: two; 5-6: three.

The present mission was attributed to the 1st Battalion, with the following composition:

Unit	Composition	OP
Reconnaissance	1 st Reece: 2x BRDM2 + 1x PT-76	7
	2 nd Reece: 2x BRDM2 + 1x PT-76	7
Mechanised Infantry (1 st Battalion)	1 st Infantry Coy: 3x BMP1+ infantry	18
	2 nd Infantry Coy: 3x BTR-60PB + infantry	12
Armoured platoon	2x T55	12
Armoured platoon	2x T55	12
AT Group	1x BRDM2 ATGW	4
AA Group	1 team w/ Strela2 (SA-7 Grail) MANPAD	2
	2x trucks w/ 4x14.5mm MG	2

Total: 76 Operational Points, **withdraw** at 40% casualties (30 OP).

Dedicated artillery support:

2x BM-21 batteries

5. Commanders' orders:

- 1 – Keep both bridges over the Lomba intact;
- 2 – Keep one bridge intact and hold back the SADF.